

# TRAC-KIT

Owner's Manual

McDonald Tool Company, LLC

6987 Nolan Rd.

Forestville, CA 95436

(707) 495-7371

[www.mcdonaldtoolcompanyllc.com](http://www.mcdonaldtoolcompanyllc.com)



# TRAC-KIT

## Compact Track Loader

### Safety:

**ALWAYS** wear the proper approved PPE (Personal Protective Equipment) when using this tool or when working with track components and equipment.

It is recommended that the user of this tool read, understand and follow all of the instruction within this manual and wear safety glasses or goggles and protective gloves whenever using this tool. Additional PPE may be required in specific application.

**ESCAPING FLUID** under pressure can cause serious injury.

**DO NOT** modify components of this kit for any reason. Modifications to the components can result in serious injury and will void the warranty.

**NEVER** use this tool for any other purpose than its intended design and always follow all recommended operational instruction. Failure to do so can result in injury and/or damage to the components of the kit or equipment.

**NEVER** use any component of the kit if it becomes damaged or worn as this can result in injury and/or damage to the equipment.

**ALWAYS** inspect the components of the kit and the component being installed prior to the use of the kit for damage or wear. Report, make repairs or replace damaged or worn components prior to use.

**KEEP** hands and fingers clear of pinch points during track removal and installation processes of track.

**KEEP** clear of moving parts and components while removing and installing track.

**NEVER** enter or exit the machine while the machine is running.

**ALWAYS** use weight approved jack stands or blocking to support machine or components (loader arms, bucket) when lifted off the ground.



## Components of the Trac-kit:



### Legend:

1. Ratchet Strap w/ Protective Tube
2. 15" 'J' Hook
3. Support Chain (Not Rated)
4. 1-1/4" Tubes (3)
5. 8" 'J' Hook
6. Duffle Bag

## Parking the machine:

1. Remove front attachment and park machine on flat, level and solid surface.

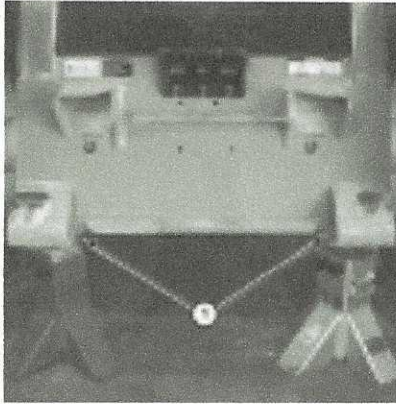
## Raising and Blocking of the machine for track replacement:

**NOTE:** the machine will need to be raised to 4-6 inches off the ground when blocked.

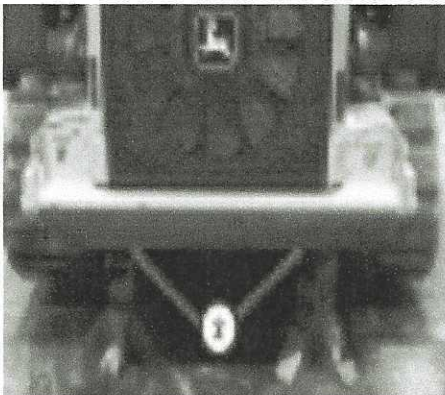
### CAUTION:

*Prevent possible crushing injury from heavy component. Use appropriate lifting device and weight approved jack stands or blocking.*

2. Place appropriate lifting device under front center of machine base and raise machine.
3. Place blocks or stands under front corners (1) of machine base.
4. Lower machine on blocks or stands.



5. Place appropriate lifting device under rear center of machine base and raise machine.
6. Place blocks or stands under rear corners (2) of machine base.
7. Lower machine on blocks or stands.

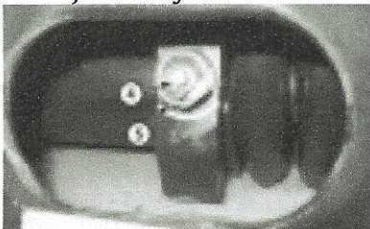


## **Track Removal:**

### **CAUTION:**

*Prevent personal injury. High-pressure grease is in track adjuster cylinder. Loosen track adjuster valve slowly. Only loosen 1—2 turns. Never loosen grease fitting to release grease.*

8. Remove track adjuster cover plate from track frame.
9. Slowly loosen track adjuster valve (5) 1—2 turns to discharge grease from track adjuster cylinder. Allow track to sag completely.



- Track Adjuster
- 4 - Grease Fitting
- 5 - Track Adjuster Valve

## CAUTION:

*Prevent possible injury from moving tracks or steel pipes. Run engine at slow idle and clear area of bystanders while moving drive sprocket.*

10. Lay three 1.5 in diameter steel pipes (9) provided in the Trac-Kit evenly spaced on track (7) below track frame.
11. Start engine and run track in reverse slowly until front idler is completely recessed into the track frame.



12. Stop engine.
13. Track inside cleats will now be clear of the idler and the track can be removed from the idler by prying it to the outside with a 6' pry bar.



## CAUTION:

*Prevent possible crushing injury from heavy component. Use appropriate lifting device.*

14. Using appropriate lifting device and a 6' pry bar. Pry and slide track away from front idler, sprocket and track frame to remove.



15. Clean and inspect track components.

### **INSTALLATION:**

### **CAUTION:**

*Prevent possible crushing injury from heavy component. Use appropriate lifting device.*

1. Roll or lift replacement track alongside machine track frame.
2. Lift track into place onto the sprocket by use of an appropriate lifting device or the 15" 'J' hook and Ratchet Strap provided in the Trac-Kit.
  - a. Insert the 15" 'J' hook inside the track, hook end first (from the outside to the inside of the track) and hook it on the inside portion of the track with the lifting loop end on the outside portion of the track.
  - b. Attach appropriate lifting device or the Ratchet Strap (for Ratchet Strap-attach opposite end of Ratchet Strap to loader mast of tractor) to loop end of 'J' hook and lift / ratchet track up to the sprocket height.



3. Push replacement track onto the sprocket and push lower portion of track into place under the rear idler.
4. Remove the 15" 'J' hook and lifting device / Ratchet Strap.



5. Using a 6' pry bar. Lift the front of the track and slide the inside portion of the track onto the front idler up to the track inner cleats.



6. At the front idler and on the bottom side under the idler. Inset the 15" 'J' hook to the inside the track (loop end first) and hook it on the outside portion of the track with the lifting loop end on the inside portion of the track.
  - a. The shank of the 'J' hook must lay between the track cleats on the inside of the track.
  - b. Also insert two of the 1.5" diameter steel pipes provided in the Trac-Kit evenly spaced on track behind the 15" 'J' hook below the track frame.

**NOTE: The two 1.5" diameter steel pipes may not be needed for the installation of the track but should be placed on the track just in case the track needs to slid over.**



7. Start Machine and lift loader until bucket pivot point is level or higher than the front idler.
8. Attach 8" 'J' hook to loader bucket main pivot point of loader on the opposite side from track being installed.





9. Attach Ratchet Strap ratcheting end to the 8" 'J' hook at the loader pivot and the strap end with the 1-1/2" guard tube to the 15" 'J' hook on the track and slide 1-1/2" guard tube down the strap to approx. 10" from the track (this will protect the strap from damage during the installation process).
10. Tighten Ratchet Strap to pull track in the direction of the front Idler.
  - a. The shank of the 15" 'J' hook must lay between the track cleats on the underside of the track.

## CAUTION:

*Prevent possible injury from moving tracks or steel pipes. Run engine at slow idle and clear area of bystanders while moving drive sprocket.*

11. Start engine and run track in reverse slowly and raise the loader lift arm to maintain tension on the ratchet strap until the track is properly aligned with the front idler and the track frame.



12. Once the track is in proper alignment with the front idler and track frame. Lower loader boom to relieve tension on Ratchet Strap and remove strap.
13. Rotate track in forward slowly to allow for removal of 15" 'J' hook and 1.5" steel pipes.

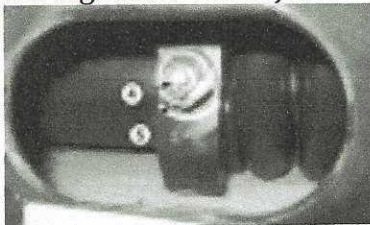




**IMPORTANT:**

Prevent possible track and machine damage. Ensure track is securely engaged on drive sprocket, rear idler, and front idler before adjusting track tension or operating machine.

14. Tighten track adjuster valve (5).



Track Adjuster

4 - Grease Fitting

5 - Track Adjuster Valve

15. Adjust track tension to manufacturer specification.



16. Using the appropriate lifting device under front center of machine base and raise machine.

17. Remove blocking or stands from front and rear of machine and lower machine to the ground.
18. Run machine in both directions without turning and recheck track tension.
19. Adjust if necessary.
20. Reinstall track adjuster cover plate on track frame.



# TRAC-KIT

## Compact Track Excavator

### Safety:

**ALWAYS** wear the proper approved PPE (Personal Protective Equipment) when using this tool or when working with track components and equipment.

It is recommended that the user of this tool read, understand and follow all of the instruction within this manual and wear safety glasses or goggles and protective gloves whenever using this tool. Additional PPE may be required in specific application.

**ESCAPING FLUID** under pressure can cause serious injury.

**DO NOT** modify components of this kit for any reason. Modifications to the components can result in serious injury and will void the warranty.

**NEVER** use this tool for any other purpose than its intended design and always follow all recommended operational instruction. Failure to do so can result in injury and/or damage to the components of the kit or equipment.

**NEVER** use any component of the kit if it becomes damaged or worn as this can result in injury and/or damage to the equipment.

**ALWAYS** inspect the components of the kit and the component being installed prior to the use of the kit for damage or wear. Report, make repairs or replace damaged or worn components prior to use.

**KEEP** hands and fingers clear of pinch points during track removal and installation processes of track.

**KEEP** clear of moving parts and components while removing and installing track.

**NEVER** enter or exit the machine while the machine is running.

**ALWAYS** use weight approved jack stands or blocking to support machine or components (loader arms, bucket) when lifted off the ground.

## Components of the Trac-kit:



### Legend:

- 1. Ratchet Strap w/ Protective Tube
- 2. 15" 'J' Hook
- 3. Support Chain (Not Rated)
- 4. 1-1/4" Tubes (3)
- 5. 8" 'J' Hook
- 6. Duffle Bag

### Parking the machine:

16. Whenever possible park machine on a flat, level and solid surface.

### Raising and Blocking of the machine for track replacement:

**NOTE:** It is best to raise one side of the machine for track replacement at a time. This will leave the opposite side on solid ground to help keep the machine stable while work is being performed. The track will need to be raised to 6 - 10 inches off the ground when blocked.

### CAUTION:

*Prevent possible crushing injury from heavy component. Use appropriate lifting device and weight approved jack stands or blocking.*

17. Using the excavator boom and arm, position the arm at 90 degrees from the boom and place it perpendicular to the front idler and raise machine.

18. Place blocks or stands under the frame of the machine.

19. Lower machine on blocks or stands.

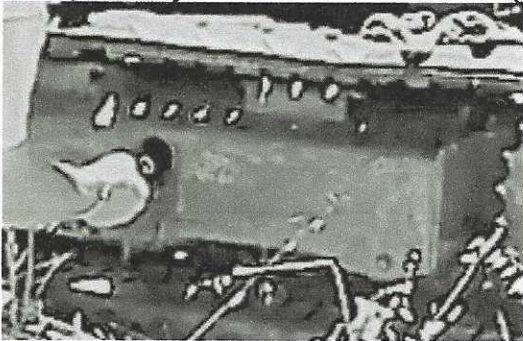


## Track Removal:

### CAUTION:

*Prevent personal injury. High-pressure grease is in track adjuster cylinder. Loosen track adjuster valve slowly. Only loosen 1—4 turns. Never loosen grease fitting to release grease.*

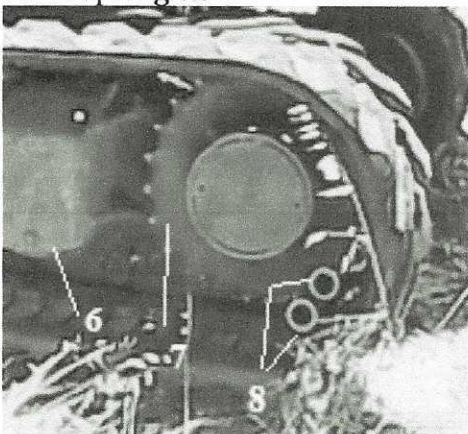
20. Remove track adjuster cover plate from track frame.
21. Slowly loosen track adjuster valve (5) 1—2 turns to discharge grease from track adjuster cylinder. Allow track to sag completely.



### CAUTION:

*Prevent possible injury from moving tracks or steel pipes. Run engine at slow idle and clear area of bystanders while moving drive sprocket.*

22. Lay Three 1.5 in diameter steel pipes provided in the Trac-Kit evenly spaced on track below track frame and in front of the drive sprocket.
23. Start engine and run track in forward slowly until front idler is completely recessed into the track frame.
24. Run the track in reverse until all three pipes are free of the sprocket and can be removed.
25. Stop engine.



### Track Removal

6 - Track Frame

7 - Sprocket

8 - Steel Pipe (2 used)

26. Using a 6' pry bar, pry the track off the sprocket to the outside of the track frame.

### **CAUTION:**

*Prevent possible crushing injury from heavy component. Use appropriate lifting device.*

27. Clean and inspect track components.

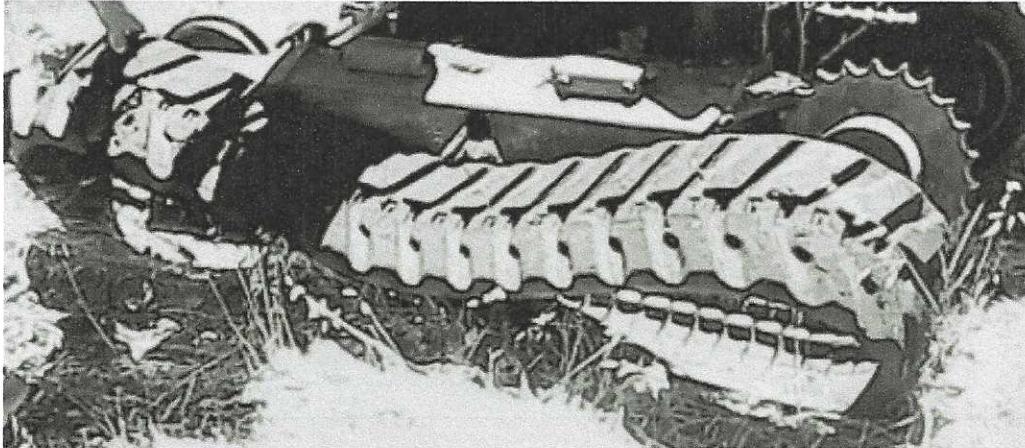
### **INSTALLATION:**

### **CAUTION:**

*Prevent possible crushing injury from heavy component. Use appropriate lifting device.*

21. Roll or lift replacement track alongside machine track frame.

NOTE: Insure directional tracks are installed in the correct direction.



22. Lift track into place onto the track frame and front idler by use of an appropriate lifting device or the 15" 'J' hook and Ratchet Strap provided in the Trac-Kit.

- a. Track must be off the front idler to the inside of the track frame to allow for enough slack for the next step.





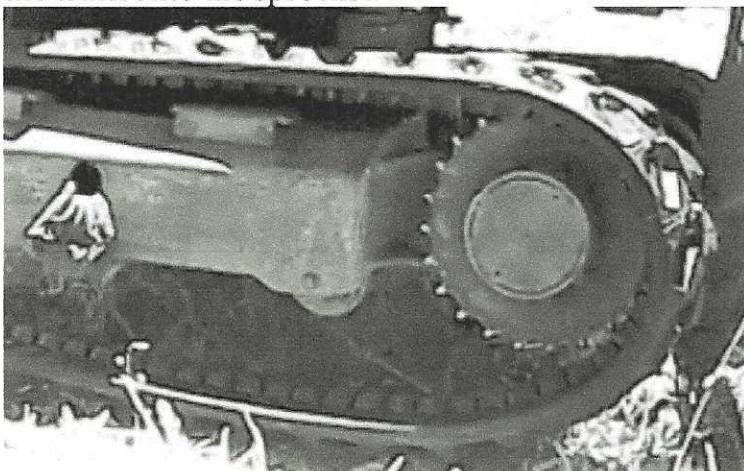
23. Lift track into place onto the top of the drive sprocket by use of an appropriate lifting device, 6" pry bar or the 15" 'J' hook and Ratchet Strap provided in the Trac-Kit.



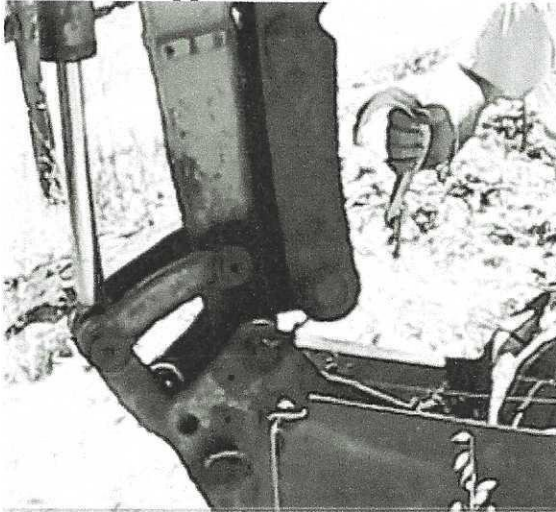
24. Using a 6' prybar between the sprocket and the track, pry the track over the top of the sprocket and into place.



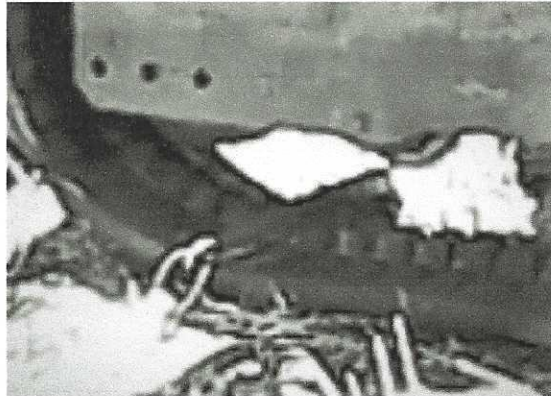
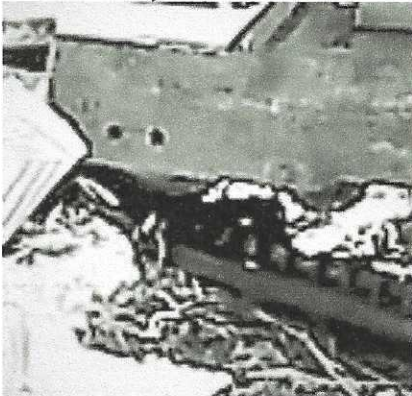
Note: If an additional person is available the track can be rotated in reverse to roll the track onto the sprocket.



25. Install the 8" 'J' Hook provided in the Trac-Kit onto a solid anchoring point on the excavator dipper stick.



26. Install the 15" 'J' Hook provided in the Trac-Kit onto the track below the track frame below and just behind the front idler.



27. Attach the 3,300 lb. ratchet strap provided in the Trac-Kit ratchet end to the 8" 'J' Hook anchored to the dipper stick and the strap end to the 15" 'J' Hook attached to the track and tighten the strap to pull the lower portion of the track into place under the front idler.





28. Start the machine and rotate the track in reverse to roll the track into place on the front idler.

29. Once the track is in place, loosen the ratchet strap and remove both 'J' Hooks.



30. Tighten track adjuster relief valve.

31. Adjust track tension to manufacturer specification.



32. Using the boom of machine to raise the machine.

33. Remove blocking or stands from the frame of machine and lower machine to the ground.

34. Run machine in both directions without turning and recheck track tension.

35. Adjust if necessary.

Reinstall track adjuster cover plate on track frame.